

Magic Box Word/Picture Cards

cat

can

man

mat

bat

hat

pan

tap

cap

sad

map

mad

lap

hill

pin

sip

lips

sit

kick

sick

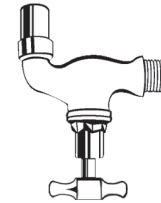
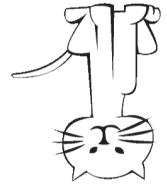
pig

jam

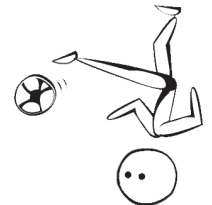
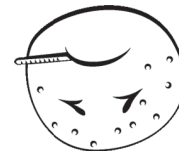
bell

ten

Magic Box Word/Picture Cards



OT



Magic Box Word/Picture Cards

5
bed

5
net

5
hen

5
men

5
pen

5
well

6
fan

7
pot

7
sock

7
top

7
dog

7
log

9
sub

9
bun

9
hut

9
sun

9
duck

9
bus

9
tub

9
tug

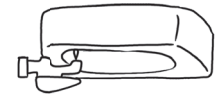
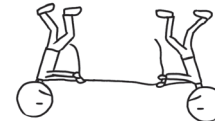
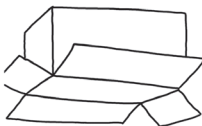
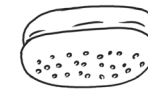
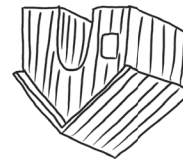
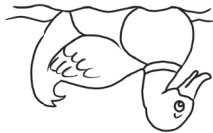
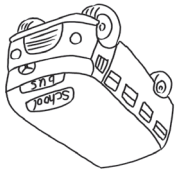
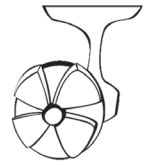
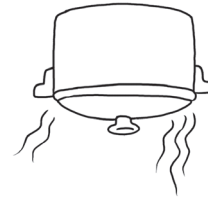
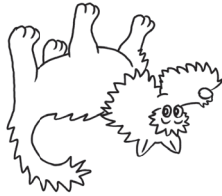
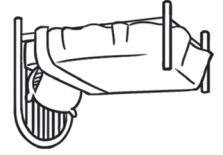
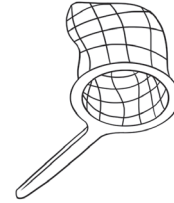
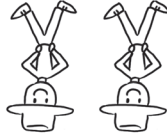
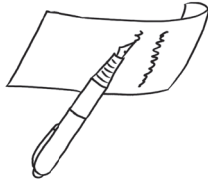
9
run

9
rug

12
box

17
blocks

Magic Box Word/Picture Cards



Magic Box Word/Picture Cards

brush stamp blink trip flag drip

swing skunk glass black grin truck

stop stick splash French clam bricks

branch string plant stump plum van

Magic Box Word/Picture Cards

